

# Thermocouple and RTD Connectors

## Overview

- High quality thermoplastic body with original thermocouple material pins
- Molded barriers prevent short circuit
- Captive central cover screw for easy assembly
- Easy wire connection pressure plate construction
- 3-pin standard connectors have a third pin for ground or continuous shield ,or 3-wire RTDs

## Thermocouple and RTD Connectors

Part Number	Sensor Type	Connector Type	Temperature Rating	Body Color	Wire size			
A1CSPL-JA	J	Standard round pin plug	Max (200°C)	Black	32AWG (0.2mm) to 14AWG			
A1CSJ-JA		Standard round pin jack			maximum (2.0mm)			
A1CMP-JA		Miniature flat pin plug			40AWG (0.08mm) to 20AWG			
A1CMJ-JA		Miniature flat pin jack			maximum (0.8mm)			
A1OSTWKMC	K	Standard round pin plug		Max (200°C)	Yellow	32AWG (0.2mm) to 14AWG		
A1OSTWKFC		Standard round pin jack				maximum (2.0mm)		
A1SMPWKMC		Miniature flat pin plug				40AWG (0.08mm) to 20AWG		
A1SMPWKFC		Miniature flat pin jack				maximum (0.8mm)		
A1SMPWTMC	T	Miniature flat pin plug			Max (200°C)	Blue	40AWG (0.08mm) to 20AWG	
A1SMPWTFC		Miniature flat pin jack					maximum (0.8mm)	
A1MTPUMC	RTD	Standard flat pin plug				Max (200°C)	White	32AWG (0.2mm) to 14AWG
A1MTPUFC		Standard flat pin jack						maximum (2.0mm)

**A1CSPL - JA & A1CSJ - JA**



**A1OSTWKMC & A1OSTWKFC**



**A1SMPWTMC & A1SMPWTFC**



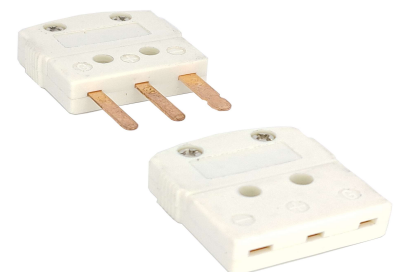
**A1CMP - JA & A1CMJ-JA**



**A1SMPWKMC & A1SMPWKFC**



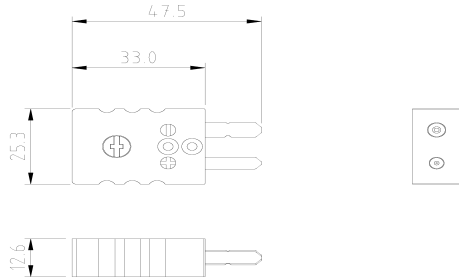
**A1MTPUMC & A1MTPUFC**



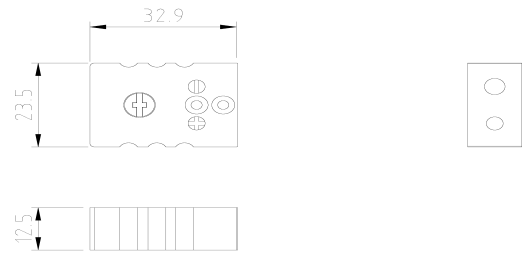
## Thermocouple and RTD Connectors

### Dimension: (mm)

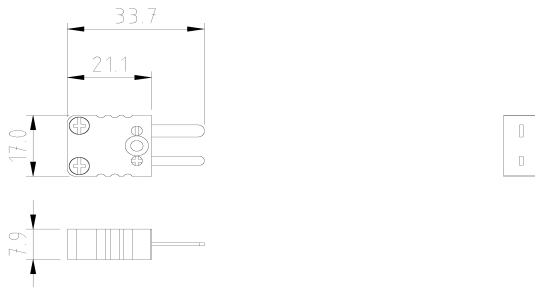
#### A1CSPL - JA & A1OSTWKMC



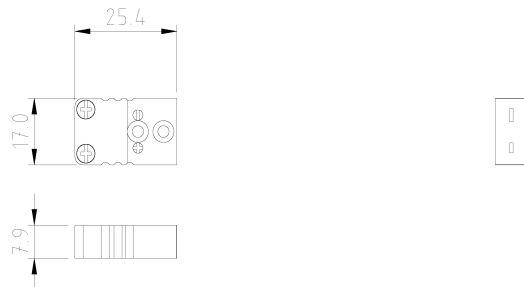
#### A1CSJ - JA & A1OSTWKFC



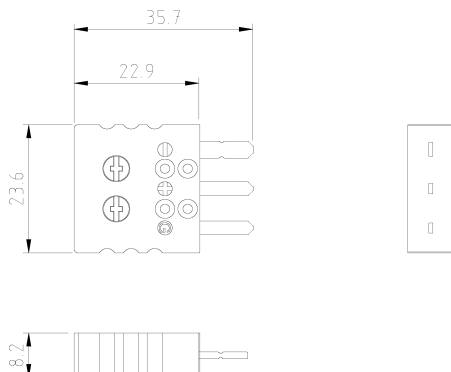
#### A1CMP - JA , A1SMPWKMC & A1SMPWTMC



#### A1CMJ - JA , A1SMPWKFC & A1SMPWTFC



#### A1MTPUMC



#### A1MTPUFC

