

Thermowells for Spring-Loaded Thermocouples and RTD's

A1TWXX – 01 & 03



A1TWXX – 02 & 04



Overview

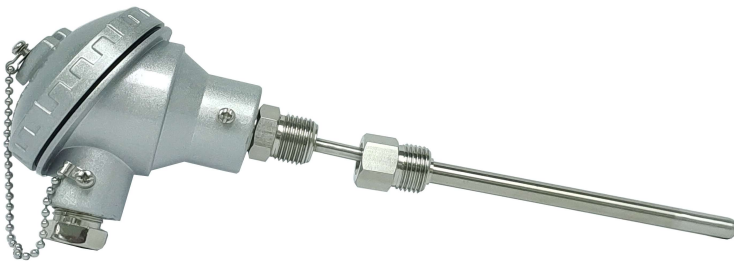
- All thermowells are custom made standard item
 - Thermowells designed for use with thermocouples, spring-loaded thermocouple and RTD probes eliminate the need for a separate probe mounting fitting or adaptor
 - Thermowells (welded) 316 stainless steel
 - 1/2" BSP and 1/2" NPT male process thread available
- Others
 - Required others type of thermowells ,specification & barstock can be custom made upon request.

Thermowells for Spring-Loaded Thermocouples and RTD's or Thermometers

Part Number	I.D	Overall Length/ "U" Length	Male Process Threads	Female Probe Threads	Wetted Material	Temperature	Use With Probe	
A1TW04-01	7.90mm	127mm/90mm	1/2" BSP	1/2" BSP	316 SS	316 SS: 530°C	A1MJ-C04-03	
A1TW04-02			1/2" NPT				A1MK-C04-03	
A1TW04-03		118mm/90mm	1/2" BSP	1/4" G			A1RTD1-C04-03	
A1TW04-04			1/2" NPT					
A1TW06-01		177mm/140mm	1/2" BSP	1/2" BSP			A1MJ-C06-03	
A1TW06-02			1/2" NPT				A1MK-C06-03	
A1TW06-03			168mm/140mm	1/2" BSP			1/4" G	A1RTD1-C06-03
A1TW06-04				1/2" NPT				
A1TW12-01		327mm/290mm	1/2" BSP	1/2" BSP			A1MJ-C12-03	
A1TW12-02			1/2" NPT				A1MJ-C12-03	
A1TW12-03			318mm/290mm	1/2" BSP			1/4" G	A1RTD1-C12-03
A1TW12-04				1/2" NPT				

Thermowells for Spring-Loaded Thermocouples and RTD's

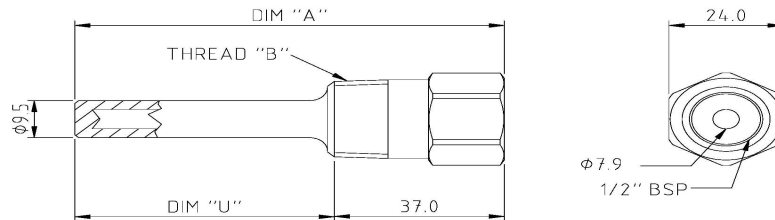
Spring-loaded Thermocouple or RTD and Themowell Assembly Example



- Using spring-loaded probe design ensures positive tip Contact with the bottom of the thermowell.
- Probes with hex nipple thread directly into thermowell. No additional probe mounting fittings are required.

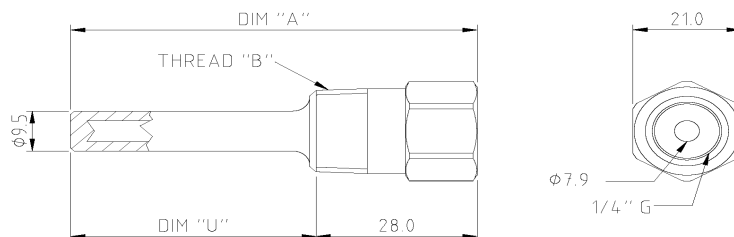
Dimension

A1TWXX – 01 & 02



PART NUMBER	DIM "A"	THREAD 'B'	DIM "U"
A1TW04-01	127mm	1/2" BSP	90.0mm
A1TW04-02	127mm	1/2" NPT	90.0mm
A1TW06-01	177mm	1/2" BSP	140.0mm
A1TW06-02	177mm	1/2" NPT	140.0mm
A1TW12-01	327mm	1/2" BSP	290.0mm
A1TW12-02	327mm	1/2"NPT	290.0mm

A1TWXX – 03 & 04



PART NUMBER	DIM "A"	THREAD 'B'	DIM "U"
A1TW04-03	118mm	1/2" BSP	90.0mm
A1TW04-04	118mm	1/2" NPT	90.0mm
A1TW06-03	168mm	1/2" BSP	140.0mm
A1TW06-04	168mm	1/2" NPT	140.0mm
A1TW12-03	318mm	1/2" BSP	290.0mm
A1TW12-04	318mm	1/2"NPT	290.0mm