

## Thermocouple and RTD Connectors

### Overview

- High quality thermoplastic body with original thermocouple material pins
- Molded barriers prevent short circuit
- Captive central cover screw for easy assembly
- Easy wire connection pressure plate construction
- 3-pin standard connectors have a third pin for ground or continuous shield ,or 3-wire RTDs

### Thermocouple and RTD Connectors

Part Number	Sensor Type	Connector Type	Temperature Rating	Body Color	Wire size	
A1CSPL-JA	J	Standard round pin plug	Max (200°C)	Black	32AWG (0.2mm) to 14AWG	
A1CSJ-JA		Standard round pin jack			maximum (2.0mm)	
A1CMP-JA		Miniature flat pin plug			40AWG (0.08mm) to 20AWG	
A1CMJ-JA		Miniature flat pin jack			maximum (0.8mm)	
A1OSTWKMC	K	Standard round pin plug		Max (200°C)	Yellow	32AWG (0.2mm) to 14AWG
A1OSTWKFC		Standard round pin jack				maximum (2.0mm)
A1SMPWKMC		Miniature flat pin plug				40AWG (0.08mm) to 20AWG
A1SMPWKFC		Miniature flat pin jack				maximum (0.8mm)
A1SMPWTMC	T	Miniature flat pin plug			Blue	40AWG (0.08mm) to 20AWG
A1SMPWTFC		Miniature flat pin jack				maximum (0.8mm)
A1MTPUMC	RTD	Standard flat pin plug			White	32AWG (0.2mm) to 14AWG
A1MTPUFC		Standard flat pin jack				maximum (2.0mm)

**A1CSPL - JA & A1CSJ - JA**



**A1OSTWKMC & A1OSTWKFC**



**A1SMPWTMC & A1SMPWTFC**



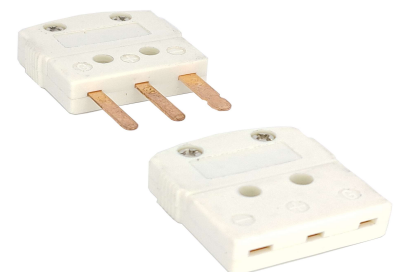
**A1CMP - JA & A1CMJ-JA**



**A1SMPWKMC & A1SMPWKFC**



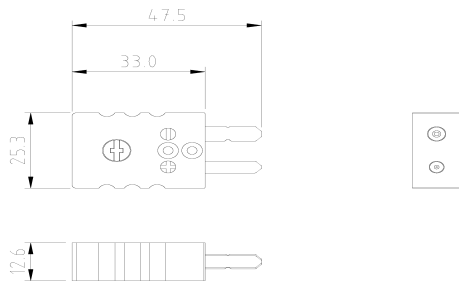
**A1MTPUMC & A1MTPUFC**



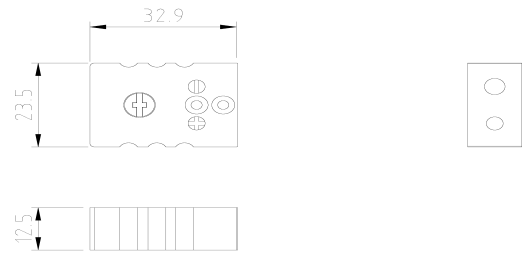
## Thermocouple and RTD Connectors

### Dimension: (mm)

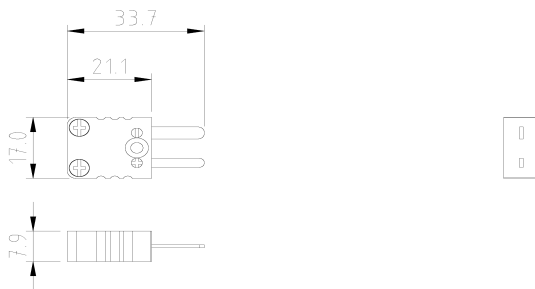
#### A1CSPL - JA & A1OSTWKMC



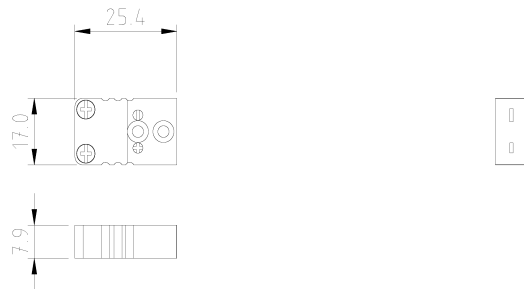
#### A1CSJ - JA & A1OSTWKFC



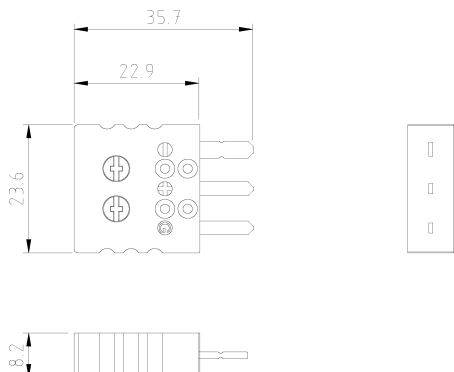
#### A1CMP - JA , A1SMPWKMC & A1SMPWTMC



#### A1CMJ - JA , A1SMPWKFC & A1SMPWTFC



#### A1MTPUMC



#### A1MTPUFC

