



PMD33

Differential Pressure Transmitter



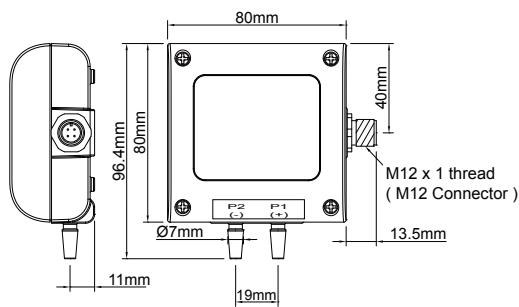
Application

- Silicon chips on Differential Pressure Module of MEMS integration technology
- Off set function by bottom / UI software
- Low-pressure monitoring, high pressure bearable
- Option RS-485 communication interface, Modbus RTU protocol
- DIP switch output and range
- Physical switch : mbar / Pa / hPa / kPa / mmH₂O / mmWS / inH₂O / mmHg
- Square root function
- Application Field — monitor differential pressure of Cleanroom / hospital / air duct / filter environment and monitor air flow

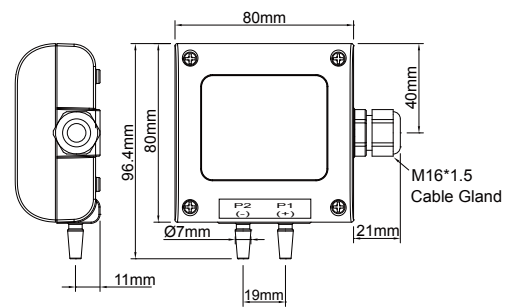
Pressure unit conversion table

Unit	Pa	mbar	hPa	kPa	mmWS	inH2O	mmHg
Range	± 50/100/250	0.5/1/2.5	0.5/1/2.5	0.05/0.1/0.25	5/10/25	0.2/0.4/1	0.375/0.75/1.875
	± 300/500/1000	3/5/10	3/5/10	0.3/0.5/1	30/50/100	1.2/2/4	2.25/3.75/7.5
	± 1000/1600/2500	10/16/25	10/16/25	1/1.6/2.5	100/160/250	4/6.4/10	7.5/12/18.75

Diagram

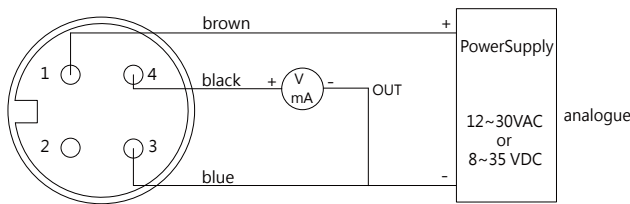


Indoor — M type

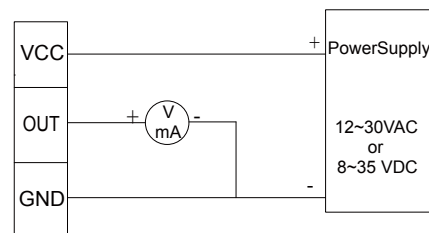


Indoor — N type

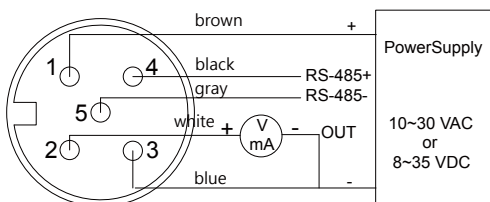
Connection



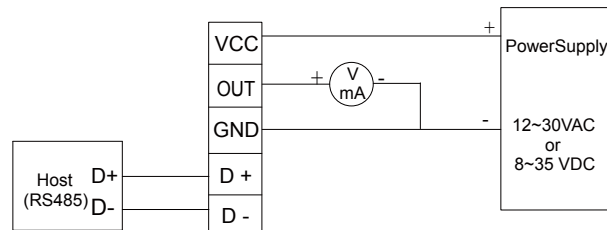
4P M12 Connector + Analogue



3P Terminal, Analogue

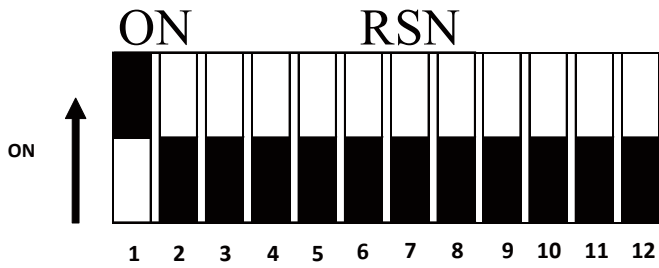


5P M12 Connector + RS-485



5P Terminal, Analogue + RS-485

DIP Switch



【 Function 】

- 1. DIP Switch Active / Deactivate
- 2. The Type for Analog Output
- 3 & 4. Switch Measuring range
- 5 & 6 & 7. Switch physical quantity unit
- 8. Zero switch
- 9. Linear / square root output switching
- 10. Filtering On / Off
- 11 & 12 . RS-485 Station no. switch

◎ 1. DIP Switch Active / Deactivate : Set the DIP switch as On/ Off

STATUS	OPEN	CLOSE
DIP Switch 1		

◎ 2. The Type for Analog Output

STATUS	0-10V	4-20mA
DIP Switch 2		

◎ 3 & 4. Switch Measuring range : upon ordering code (unit : Pa)

DIP Switch 3	DIP Switch 4	Range (10)	Range (20)	Range (30)
		50	300	1000
		100	500	1600
		250	1000	2500
		upon request		

(Other unit : please reference pressure unit conversion table)

◎ 8. Zero switch

STATUS	0-100 %	-100~100%
DIP Switch 8		

◎ 9. Linear / square root output switching

STATUS	√	LINEAR
DIP Switch 9		

◎ 10. Filtering On / Off

STATUS	OPEN	CLOSE
DIP Switch 10		

◎ 11 & 12. RS-485 Station no. switch ID 1-4

DIP Switch 11	DIP Switch 12	STATION
		1
		2
		3
		4

◎ 5 & 6 & 7. Switch physical quantity unit

DIP Switch 5	DIP Switch 6	DIP Switch 7	UNIT
			mbar
			Pa
			hPa
			kPa
			mmH2O
			mmWS
			inH2O
			mmHg